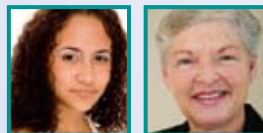


5 AAUW Fosters Networks That Help Women Succeed

- **Fellowships and Grants Alumnae Network**—Identify and engage past awardees to create a strong network that encourages career advancement and participation in the AAUW community.
- **College/University Partner Members**—Build AAUW's reach and impact by recruiting colleges and universities to become AAUW partner members. As an added benefit, all their undergrads can get free e-memberships and access to great AAUW member discounts (PIAB).
- **Student Branch Members**—Recruit students and engage them in your branch activities and/or help them start campus satellite branches (PIAB).
- **Census 2010: Census in Schools**—Work with K-12 schools to ensure that all kids are counted in the 2010 census so that your schools and community get their proper allocation of resources (PIAB).
- **Community Action Grant**—Establish or support a CAG to benefit women and girls in your community.
- **International Women's Day**—Host an event to celebrate AAUW's international commitment.
- **¡Adelante!**—Conduct monthly book discussions based on the ¡Adelante! book list.
- **Social Networking**—Use Facebook, Twitter, blogs, AAUW Dialog, Second Life, YouTube, and the AAUW on-line orientation to connect with and expand the AAUW community and to exchange ideas and resources.

6 AAUW Develops and Motivates Leaders

- **National Conference for College Women Student Leaders**—Identify students from your community and support their attendance or contribute to the NCCWSL scholarship fund. Work with C/U partners to share costs. Leverage participation to recruit new C/U partner members (PIAB).
- **Campaign College**—Help your regional C/U partner members hold a workshop to encourage women to run for student government and for post-college elected office.
- **Student Advisory Council**—Identify and recruit students to apply for the national SAC, or start a state SAC.
- **AAUW Leadership**—Encourage members to run for branch and/or state office or apply for national and state committees, task forces, and Leadership Corps.



Encourage Others to Join!

AAUW is a community of people working together to break through barriers for women and girls. Continue the AAUW tradition of advancing equity by encouraging others to join. You can also give a gift membership to someone you know, or give a recent graduate a free AAUW membership. More than 90 percent of AAUW membership dues are tax deductible.

? How are you breaking through barriers?

Share your branch and state ideas and best practices for programming with the rest of the AAUW community. Visit www.aauw.org/btbBrochure.cfm for details.

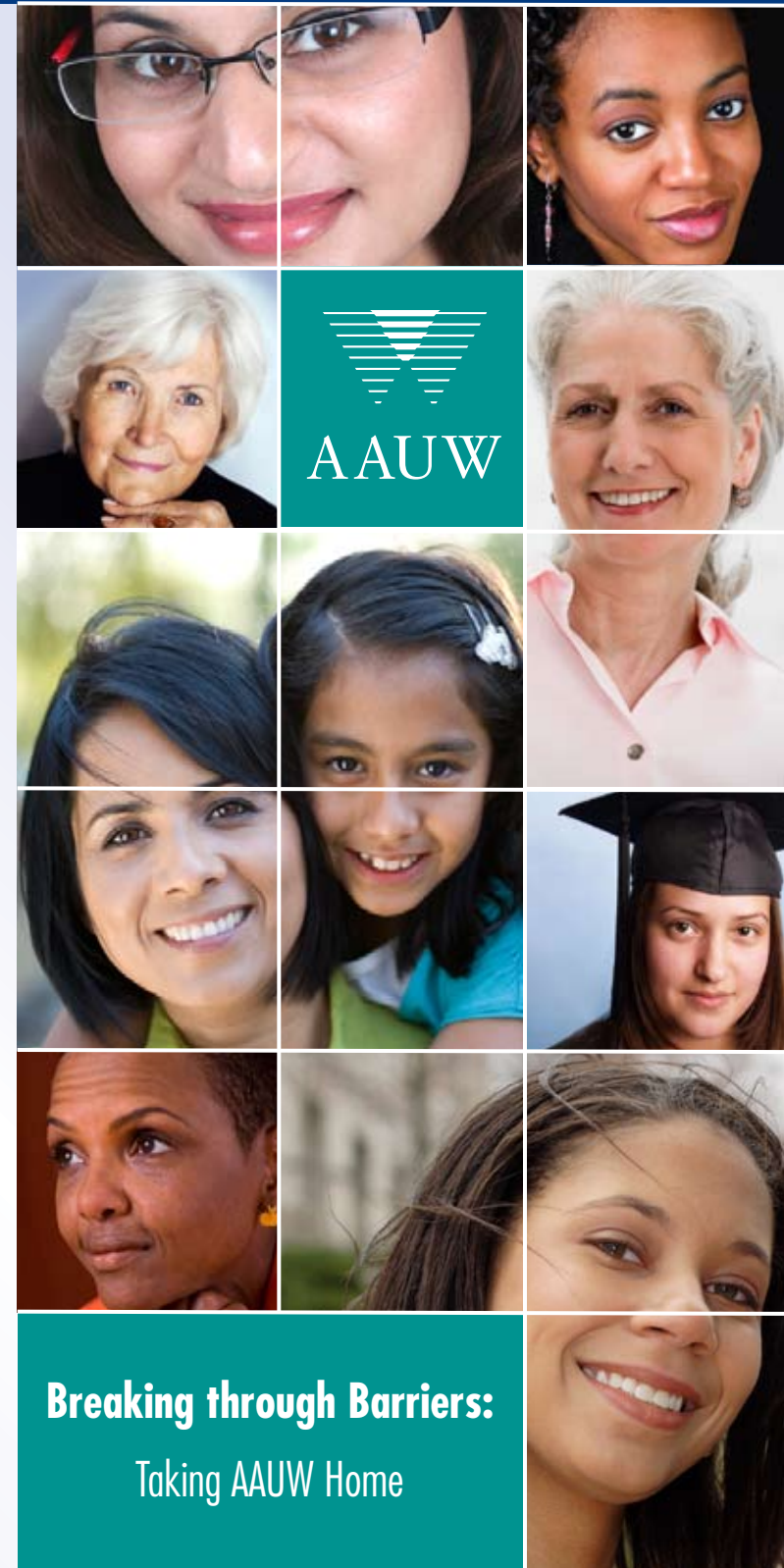


Mission statement: AAUW advances equity for women and girls through advocacy, education, and research.

Value Promise: By joining AAUW, you belong to a community that breaks through educational and economic barriers so that all women have a fair chance.

In principle and practice, AAUW values and seeks a diverse membership. There shall be no barriers to full participation in this organization on the basis of gender, race, creed, age, sexual orientation, national origin, disability, or class.

AAUW, 1111 Sixteenth St. N.W., Washington, DC 20036
Tel: 800/326-AAUW (2289) or 202/785-7700, Fax: 202/872-1425
E-mail: connect@aauw.org
www.aauw.org



State and branch programming helps you take the mission of AAUW home to your community. Because of the resources and expertise available to you through AAUW, you can deliver these exceptional programs locally as part of our nationwide strategy to break through educational and economic barriers for women and girls. Visit the AAUW website for more information and to download helpful "Program in a Box" materials. Activities listed here that already have an accompanying Program in a Box are denoted by (PIAB) at the end of the description.

1 AAUW Advocates for Women's Career, Financial, and Life Choices

- **Public Policy Workshop**—Teach branch members about the AAUW resources that keep them informed on current policy issues that affect women and girls.
- **Public Forums**—Host local candidates, experts, policy-makers, and issues forums (PIAB).
- **AAUW Action Fund Lobby Corps**—Plan a branch trip to D.C. and go with AAUW Lobby Corps to Capitol Hill (use TravelSmart).
- **Local Lobby Corps**—Establish your own state or branch lobby corps.
- **Get Out the Vote**—Conduct Woman-to-Woman Voter Turnout Campaign activities to register women voters and mobilize them to go to the polls (PIAB).
- **AAUW Action Fund Congressional Voting Record**—Disseminate and use the CVR to hold your senators and representatives accountable for their votes on AAUW priority issues.
- **Financially Fit for Life**—Hold a workshop (PIAB).
- **Affinity Partners**—Promote programs that provide discounts to members and support our advocacy.
- **In-District Meetings**—Visit policy-makers and advocate for AAUW priorities.

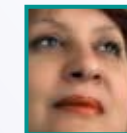
2 AAUW Champions Equitable Compensation and Treatment

- **Start\$mart**—Market Start\$mart salary negotiation workshops for college women to local college and university partners; urge members to become workshop leaders.
- **Sexual Assault Policy Reform Project**—Participate in the pilot program to establish effective sexual assault policies on campuses (fall 2009).
- **Title IX Enforcement Project**—Use AAUW's tool to assess athletic services equity in your community for girls in grades 7–12 and report disparities (fall 2009).
- **Dialogue**—Conduct a community dialogue or roundtable based on AAUW research, policy position papers, and the LAF Online Resource Library content, such as pregnancy discrimination, family and medical leave, pay equity, tenure, Title IX, or sexual assault and harassment.
- **Campus Action Projects**—Encourage college and university partner applications for CAP grants to support projects that promote women and girls—a great way to recruit members and C/U partners (fall 2009).
- **LAF Campus Outreach Program**—Apply for funding and LAF staff support to implement a gender equity-focused program or event on your local C/U campus.
- **LAF Plaintiff /Attorney Speaker**—Hold an event, request an AAUW Plaintiff Travel Grant, invite the community, and raise funds to support LAF strategic litigation.
- **Equal Pay Day**—Plan and implement your activities. Use the 2009 Member Showcase calendar to get ideas and share your own activities online (PIAB).

- **Pay Equity Programming**—Implement pay equity programming year-round (PIAB).
- **Key Date Promotions**—Use the key date (e.g., Women's History Month, Equal Pay Day, etc.) ads, web stickers, and other materials (fall 2009).

How Are We Breaking through Barriers?

AAUW has always been breaking through educational and economic barriers, but we only recently put a name to it. Since 1881, our AAUW community has been working to make sure that all women have a fair chance. Help share this unified focus and unique AAUW identity by using the term "Breaking through Barriers" on your website and publication materials whenever possible.



3 AAUW Promotes Challenging Careers as a Means to Improved Quality of Life

- **National Girls Collaborative Program (NGCP)**—Initiate, participate in, and/or evaluate STEM projects for girls in grades 6–12 in your community.
- **AAUW STEM Research**—Share the new AAUW research report on STEM program effectiveness with your community (early 2010).
- **Selected Professions Fellowships**—Encourage applicants for these fellowships that support women in professional degree programs in fields where female participation traditionally has been low.

4 AAUW Supports Accessible, Affordable, High-Quality Education for All Women and Girls

- **Local Undergraduate Scholarship Clearinghouse**—Promote your local scholarships through this online clearinghouse to attract a larger pool of highly qualified candidates for your selection committee to review (PIAB).
- **Advocate for Educational Opportunities**—Work to protect and expand government programs that advance higher education and K–12 opportunities for women and girls using AAUW's myriad public policy resources.
- **Support Graduate Education**—Support existing fellowships or grants.

Giving to AAUW

All these programs are made possible by contributions from individual donors. Donations to AAUW Funds provide much-needed, tax-deductible support to many of these important endeavors. You may also direct your tax-deductible gifts to the specific program areas that you care about most. For example, in the memo section of your check, write "Educational Programs," "Legal Advocacy Fund," "Eleanor Roosevelt Research Fund," "Advocacy," "Leadership Programs," or any specific fund or giving circle. Donations to the AAUW Action Fund support Lobby Corps activities and the *Congressional Voting Record* and are not tax deductible.

For more giving opportunities or to give a gift online, please visit www.aauw.org/contribute.